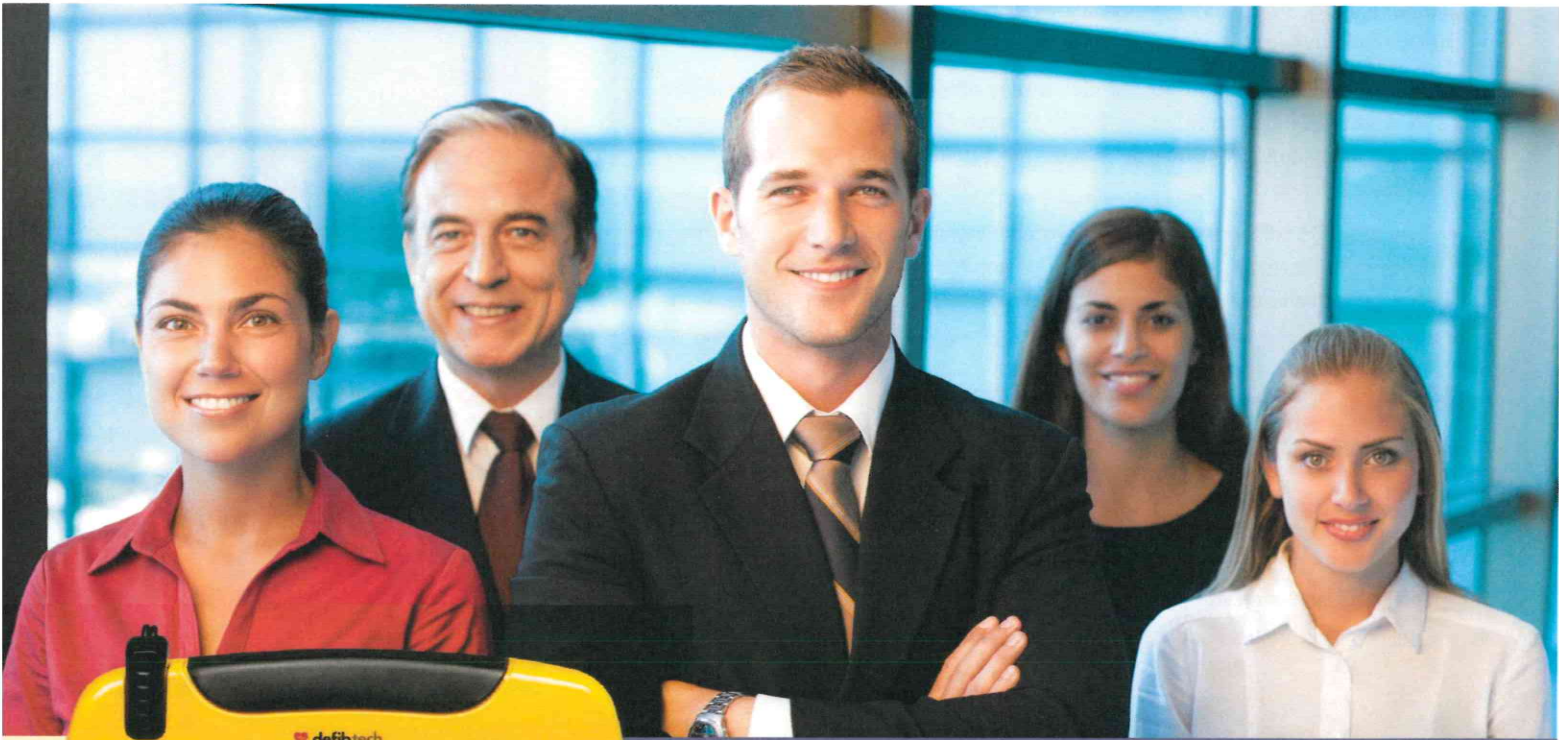


Be a Hero Help Save a Life



A Defibtech AED in the workplace can make the difference between life and death.



Defibtech Lifeline AEDs

- ♥ Unprecedented ease-of-use
- 🔗 Robust and durable
- 🔧 Easy maintenance



Offering the best selection for saving a life.

FIRST FOR SAFETY



defibtech

Life-Saving Technology Within Reach



THE DEFIBTECH FAMILY OF PRODUCTS.

Defibtech AEDs offer industry-leading innovation, simplicity and elegance. Our products include a fully-automated defibrillator that analyzes heart rhythms and automatically delivers a shock, the only AED with a full-color video display, and a defibrillator for professional responders with full manual capabilities.



DEFIBTECH LIFELINE VIEW™

The only AED with a full-color video display that shows step-by-step videos for saving a life. Users simply follow the extensive voice prompts and automated instructions.



Protect your most valuable asset—your employees.

Sudden cardiac arrest (SCA) can happen at any time. And when it happens outside the hospital fewer than 8% survive. In fact, SCA is such a serious medical emergency that survival rates decrease by 7-10% for every minute that passes without a shock. Fortunately, defibrillation using an automated external defibrillator (AED) within three minutes can increase survival rates to more than 70%.

Should an employee, customer, vendor, or any other person at your workplace suffer sudden cardiac arrest, a Defibtech Lifeline AED can make the difference between life and death. Decision makers are turning to Defibtech for its innovative offerings.

- Over 200,000 sold worldwide: Deployments include workplaces, government buildings, airports and aircraft, rail stations and trains, educational institutions, emergency vehicles, resorts, arenas, and marine vessels
- Lifeline was the most successfully used AED in a study of minimally trained users

With a Defibtech AED, help is always within reach.

Defibtech Lifeline AEDs are so easy to use, virtually anyone can be a lifesaver.

- Clear voice prompts with visual text guidance and brightly lit progress lights, or full-color video displays, lead the user through the rescue step-by-step
- Built to U.S. Military specifications, Lifeline AEDs are robust, dust protected, and spray / water resistant
- Lifeline AEDs are field upgradable on-site when CPR guidelines change

A sampling of the thousands of Defibtech customers.

Corporations, Entities, and Public Spaces

- | | | |
|---|---|--|
| <ul style="list-style-type: none"> • Amazon • Amtrak • Atlanta Braves • Bayer • Blue Cross Blue Shield • Boy and Girl Scouts of America • Bristol-Myers Squibb • Caesars Palace • Chicago Bears • Chicago Bulls • City Colleges of Chicago • Coca-Cola • Dallas Convention Center • Delta Airlines • DuPont Chemical • Fidelity Investments | <ul style="list-style-type: none"> • General Mills • Gold's Gym • Google • Hard Rock Casinos • IBM • LA Fitness • Mandarin Oriental Hotel Group • Marriott Hotels • Nestlé • New York Times • O'Hare International Airport • Paramount Pictures • Pfizer • Philadelphia Flyers • Pricewaterhouse Coopers • Ritz-Carlton | <ul style="list-style-type: none"> • State Farm Insurance • T-Mobile • Unilever BestFoods • Whole Foods • Yale University • YMCA |
|---|---|--|

Government Agencies

- Florida National Guard
- Louisiana Bureau of EMS
- Metro Boston Transit Authority
- New Jersey Transit
- Ohio National Guard
- The Pentagon
- U.S. Coast Guard
- U.S. Department of Justice

LEARN MORE ABOUT DEFIBTECH AEDs

DISTRIBUTOR INFORMATION



105 Fourth Street, Unit A
 Midland, ON L4R 3S9
 Phone: 705-526-3853
 Toll Free: (888) FRST-AID
info@firstforsafety.ca

ELECTRONIC DISTRIBUTION
 DMKT-GD002-112

Revolutionary AEDs

FIRST FOR SAFETY



Lifesaving Technology with Defibtech, the best AEDs Medical Technology can offer

First For Safety is a distributor for



The Lifeline AED

The original Defibtech AED includes all mission critical features necessary to provide the most advanced treatment for Sudden Cardiac Arrest. It is so simple and unintimidating to use that even non-medical personnel can effectively save lives.

\$1795.00 + HST



The Lifeline VIEW

The Lifeline VIEW AED is the first and only AED with a full-color interactive display that shows step-by-step videos for performing CPR, rescue breathing and external defibrillation.

\$2095.00 + HST

Call us First! First for Safety, Quality & Customer Service!

FIRST FOR SAFETY 105 Fourth Street, Midland, ON L4R 2N1

Phone: (705) 526-3853 Email: info@firstforsafety.ca Website: www.firstforsafety.ca

Prices subject to change without notice due to supplier costs. We'll happily confirm pricing before purchase.



defibtech

Life-Saving Technology Within Reach



Defibtech Lifeline AED
DDU-100 Series
\$1795.00 +HST

LIFELINE AED® Semi-automatic Defibrillator

■ Technologically advanced enough to include all mission critical features necessary to provide the most advanced treatment for Sudden Cardiac Arrest. Yet so simple and unimimidating to use that even non-medical personnel can effectively save lives.

■ For first response professionals like police, fire and EMS, the Lifeline AED (Automated External Defibrillator) is standard equipment. For schools, offices, stores, malls, factories, and public places, it's becoming as vital as the fire extinguisher.



Defibtech's breakthrough design makes it possible for every budget to afford a life-saving AED



Brilliant Design

With its bright yellow and black coloring and attractive, sleek curves, the non-intimidating Lifeline AED invites prominent display anywhere.

Latest Technology

The biphasic defibrillation we use is extremely effective at resuscitating patients in ventricular fibrillation - the most common form of Sudden Cardiac Arrest - on the first shock.

Easy to Use

The Lifeline AED is designed for speed and simplicity. Built to the demanding standards of professional emergency personnel. Simple enough for non-medical users.

Lightweight, Durable

At just 4.2 pounds a child could carry it. Plus, the Lifeline AED is tested to US Military "drop and shock" specifications.

Handle This

Roomy, sure-grip rubberized handle makes it simple to pull off the wall and carry quickly to the patient.



Text, Lights and Voice

Guides

A calm voice guides the responder step by step while a text display with lights shows the progress.



Pads at the Ready

The electrode pads are tucked into a back pocket ready to apply.



Big Buttons

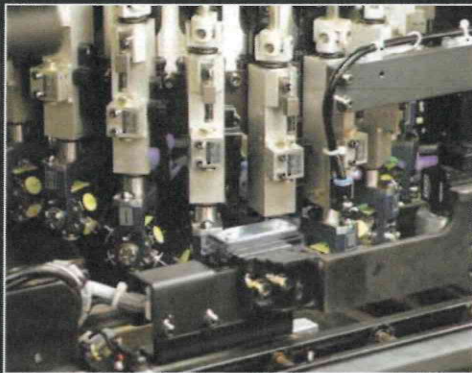
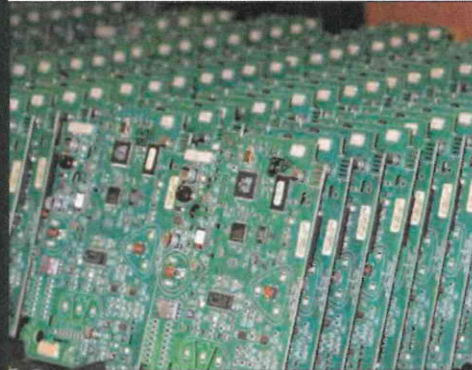
The "Power On" and "Shock" buttons are oversized and brightly lit so even the most nervous fingers will hit their mark.



World-class design, manufacturing and testing allows Defibtech to offer a revolutionary AED at a revolutionary price

State-of-the-Art Product Design

Using state-of-the-art engineering techniques and computer automated design (CAD) tools, Defibtech engineers put best-in-class features on a unit that can be mass produced without compromising quality or reliability.



Fully Automated Circuit Board Construction

The Defibtech Lifeline is manufactured using the most modern automated production and testing equipment available. This ensures that the devices are produced exactly the same way every time, reducing production time and unit cost, while simultaneously increasing quality and reliability.

Comprehensive Quality Testing

Before the Lifeline even reaches final inspection, it has already been optically inspected by a computer vision system and tested by an automated ICT system that checks thousands of electrical parameters. Each and every Lifeline AED is individually tested and inspected by a trained Defibtech technician before shipment.



Ready for Delivery - Ready for Rescue

Defibtech delivers the most cost-effective AED on the market at the highest levels of quality and reliability. Our customers receive a world-class product without having to wait for their life-saving AED to arrive due to production backlogs or manufacturing delays.

Be a Hero, Save a Life...

with the Defibtech Lifeline AED

Sudden Cardiac Arrest is a Serial Killer...



■ In the United States alone, Sudden Cardiac Arrest (SCA) kills over 400,000 of our family members, co-workers, friends and neighbors each year.

■ Each year, more people are killed by Sudden Cardiac Arrest than by car wrecks, cancer, handguns, house fires, and AIDS combined.

...but it can be treated

■ Unlike other health problems of this magnitude, however, sudden cardiac arrest is treatable. The only cure for most cases of Sudden Cardiac Arrest is immediate shock therapy from an AED, a device that shocks a lifeless heart back to a normal rhythm.

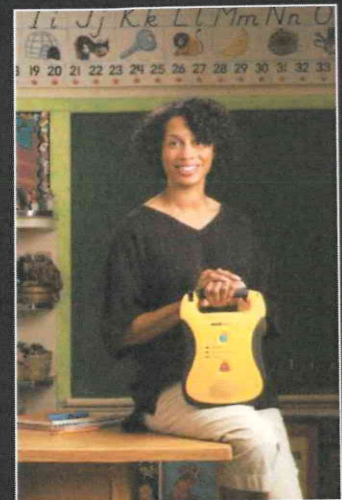
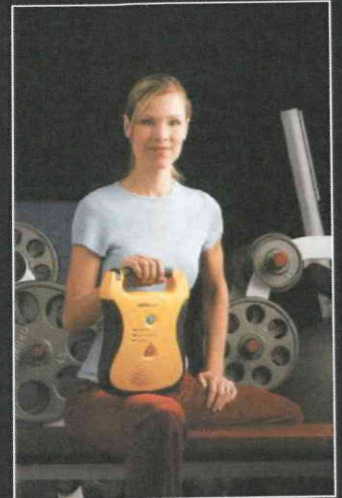
To learn more about the Defibtech Lifeline AED, contact us at:

FIRST FOR SAFETY



105 Fourth Street, Unit A
Midland, ON L4R 3S9
Phone: 705-526-3853
Toll Free: (888) FRST-AID
info@firstforsafety.ca

Anyone, Anytime, Anywhere...



defibtech

Life-Saving Technology Within Reach

LIFELINE

Life-Saving Technology Within Reach



Defibtech Lifeline AED
DDU-100 Series
\$1795.00 +HST

LIFELINE AED Semi-automatic Defibrillator

Defibtech has designed a revolutionary new semi-automatic external defibrillator, from the ground up.

Technologically advanced enough to include all mission critical features necessary to provide the most advanced treatment for Sudden Cardiac Arrest. Yet so simple and unintimidating to use that even non-medical personnel can effectively save lives.

The Lifeline AED was developed by experienced multidisciplinary engineering teams and incorporates state-of-the-art digital signal processing techniques and advanced ECG analysis algorithms.

This enables the device to exceed the American Heart Association performance recommendations, giving the user confidence the correct therapy is being delivered.

The Lifeline AED defibrillator uses advanced biphasic technology — including the most studied biphasic shock waveform — and automatically adjusts the shock delivery to the person's individual needs.

For first response professionals like police, fire and EMS, the Lifeline AED is standard equipment. For schools, offices, stores, malls, factories, and public places, it's becoming as vital as the fire extinguisher.

FIRST FOR SAFETY



105 Fourth Street, Unit A
Midland, ON L4R 3S9
Phone: 705-526-3853
Toll Free: (888) FRST-AID
info@firstforsafety.ca

LIFELINE AED Semi-automatic Defibrillator

Technical Specifications*

Defibrillator

TYPE

Semi-automatic external defibrillator

MODELS

DDU-100A, DDU-100E

WAVEFORM

Biphasic Truncated Exponential (Impedance compensated)

ENERGY

150-Joules (nominal into 50 ohm load)

CHARGE TIME (typical)

Less than 6 seconds

(DBP-2800 battery pack)

Less than 9 seconds

(DBP-1400 battery pack)

SHOCK-TO-SHOCK

CYCLE TIME Less than 20 seconds (typical, includes analysis and charging time)

VOICE PROMPTS

Extensive voice prompts guide user through operation of the unit

CONTROLS

- Lighted On/Off button
- Lighted Shock button

INDICATORS

- "check pads"
- "do not touch patient"
- "analyzing"
- AED status LED

Defibrillation/Monitoring Pads

MODEL

Adult – DDP-100
Child/Infant – DDP-200P

TYPE

Pre-connected, single-use, non-polarized, disposable, self-adhesive electrodes with cable and connector

SURFACE AREA

103 cm² (nominal, each pad)
50 cm² (nominal, each pad)

PAD PLACEMENT

Adult – Anterior/Anterior
Child/Infant – Anterior/Posterior

CABLE LENGTH (typical)

48 in (122 cm)

Event Documentation

INTERNAL EVENT RECORD

Critical ECG segments and rescue event parameters are recorded and can be downloaded to a removable data card

PC-BASED EVENT REVIEW

ECG with event tag display, and audio playback when available

REMOVABLE STORAGE

(optional) Up to 12 hours of ECG and event data storage (no audio option) or up to 1:40 of audio, ECG and event storage (audio option) on a removable data card. Actual length of storage is dependent on card capacity

Patient Analysis System

PATIENT ANALYSIS

Automatically evaluates patient impedance for proper pad contact. Monitors signal quality and analyzes patient ECG for shockable/non-shockable rhythms

SENSITIVITY/SPECIFICITY

Meets AAMI-DF-39 specifications and AHA recommendations

Environmental

TEMPERATURE

Operating: 0 to 50°C (32 to 122°F)
Standby: -25 to 50°C (-13 to 122°F)

RELATIVE HUMIDITY

Operating / Standby: 5% – 95% (non-condensing)

ALTITUDE

-500 to 15,000 ft (-150 to 4500 m) per MIL-STD-810F 500.4 Procedure II

VIBRATION

Ground (MIL-STD-810F 514.5 Category 20)

Helicopter (RTCA/DO-160D, Section 8.8.2, Cat R, Zone 2, Curve G)

Jet Aircraft (RTCA/DO-160D, Section 8, Cat H, Zone 2, Curves B & R)

SHOCK / DROP**ABUSE TOLERANCE**

MIL-STD-810F 516.5 Procedure IV (1 meter, any edge, corner, or surface, in standby mode)

SEALING / WATER RESISTANCE

IEC60529 class IP54; Splash Proof, Dust Protected (Battery Pack installed)

ESD

EN61000-4-2: 1998, (open air up to 8kV or direct contact up to 6kV)

EMC (Emission)

EN60601-1-2 limits (1993), method EN55011: 1998 Group 1 Level B

EMC (Immunity)

EN60601-1-2 limits (1993), method EN61000-4-3: 1998 Level 3 (10V/m)

Battery Pack

MODEL DBP-2800**MODEL** DBP-1400**POWER**

15V, 2800 mAh

POWER

15V, 1400 mAh

CAPACITY (new, at 25° C)

- 300 shocks or 16 hours continuous operation

CAPACITY (new, at 25° C)

- 125 shocks or 8 hours continuous operation

STANDBY-LIFE (typical)

- 7 years

STANDBY-LIFE (typical)

- 5 years

TYPE

- Lithium/Manganese Dioxide
- Disposable, recyclable, non rechargeable

LOW BATTERY INDICATORS

- Visible
- Audible

Self Tests

AUTOMATIC

Automatic daily, weekly and monthly circuitry tests

USER-INITIATED

Unit and battery pack system test initiated by the user

BATTERY INSERTION

System integrity test on battery insertion

STATUS INDICATION

Visual and audible indication of unit status

PAD PRESENCE

Pads preconnected tested daily

Physical

SIZE

8.5 x 11.8 x 2.7 inches
(22 x 30 x 7 cm)

WEIGHT (Approximate)

With DBP-1400: 4.2 lbs (1.9 kg)
With DBP-2800: 4.4 lbs (2.0 kg)

*Specifications subject to change without notice

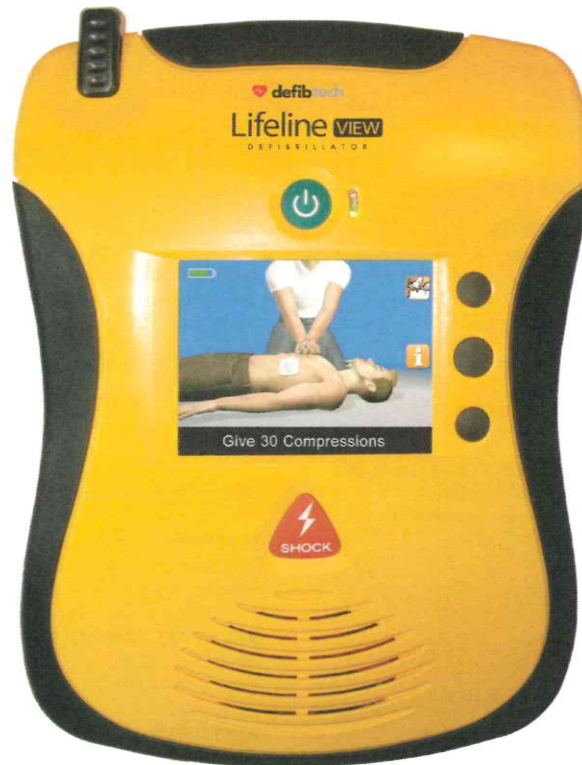
FIRST FOR SAFETY



105 Fourth Street, Unit A
Midland, ON L4R 3S9
Phone: 705-526-3853
Toll Free: (888) FRST-AID
info@firstforsafety.ca



Lifeline VIEW



Defibtech Lifeline View AED
DDU-2300 Series
\$2095.00 +HST

Lifeline VIEW Semi-Automatic Defibrillator

FULL-COLOR VIDEO INSTRUCTION DELIVERS BREAKTHROUGH EASE-OF-USE

The Lifeline VIEW makes it easy for anyone — from first responders to untrained bystanders — to respond confidently and appropriately during an emergency. This revolutionary life-saving device combines a sleek, user-friendly design with military-grade specifications — including the most proven biphasic waveform. It's also the first and only AED with a full-color interactive display that shows step-by-step videos for performing CPR, rescue breathing and external defibrillation.

You can also be confident that the device will be easy to maintain and ready for rescue. The Lifeline VIEW provides clear guidance for using and maintaining the device. Additionally, it has been designed to support upgrades and enhancements.

Like the original award-winning Defibtech AED, the Lifeline VIEW includes all the mission-critical features necessary to provide the most advanced cardiac treatment and exceeds the American Heart Association performance recommendations.



FIRST FOR SAFETY



105 Fourth Street, Unit A
Midland, ON L4R 3S9
Phone: 705-526-3853
Toll Free: (888) FRST-AID
info@firstforsafety.ca

Lifeline VIEW Semi-Automatic Defibrillator

TECHNICAL SPECIFICATIONS†

DEFIBRILLATOR

TYPE

Semi-Automatic external defibrillator

MODEL

DDU-2300 series

WAVEFORM

Biphasic Truncated Exponential (Impedance compensated)

ENERGY

Adult: 150 Joules
Child / Infant: 50 Joules
(Nominal into 50 Ohm load)

CONTROLS

Lighted On/Off button
Lighted Shock button

CHARGE TIME*

Less than 4 seconds
(shock decision to shock)

DISPLAY

High-resolution color LCD

VIDEO PROMPTS

Full motion video
On-screen text prompts

CPR COACHING

Video and voice coaching
On-demand video help

VOICE PROMPTS

Extensive voice prompts guide user through operation of the unit

RESCUE PROTOCOL

AHA/ERC 2010
Supports protocol updates by the user (password protected)

*typical, with new battery at 25° C

DEFIBRILLATION / MONITORING PADS

MODEL

Adult: DDP-2001
Child / Infant:
DDP-2002 and DDP-2003

SURFACE AREA**

Adult: 77 cm²
Child / Infant: 50 cm²

TYPE

Pre-connected, single-use, non-polarized, disposable, self-adhesive electrodes with cable and connector

**nominal, each pad

EVENT DOCUMENTATION

INTERNAL EVENT RECORD

Critical ECG segments and rescue event parameters are recorded (greater than 60 minutes) and can be downloaded to a removable data card

PC-BASED EVENT REVIEW

ECG with event tag display, and audio playback when available

REMOVABLE STORAGE

(optional) Up to 30 hours of ECG and event data storage (no audio option) or up to 3 hours of audio (audio option). ECG and event storage on a removable data card. Actual length of storage is dependent on card capacity.

USB PORT

Event download and maintenance operations

PATIENT ANALYSIS SYSTEM

PATIENT ANALYSIS

Automatically evaluates patient impedance for proper pad contact. Monitors signal quality and analyzes patient ECG for shockable/non-shockable rhythms.

SENSITIVITY/SPECIFICITY

Meets AAMI-DF-80 specifications and AHA recommendations

ENVIRONMENTAL

TEMPERATURE

Operating: 0 to 50°C (32 to 122°F)
Standby: 0 to 50°C (32 to 122°F)

RELATIVE HUMIDITY

Operating / Standby: 5%-95% (non-condensing)

ALTITUDE

-500 to 15,000 ft (-150 to 4500 m) per MIL-STD-810F 500.4 Procedure II

VIBRATION

Ground (MIL-STD-810F 514.5 Category 20)

Helicopter (RTCA/DO-160D, Section 8.8.2, Cat R, Zone 2, Curve G)

Jet Aircraft (RTCA/DO-160D Section 8, Cat H, Zone 2, Curves B & R)

SHOCK / DROP ABUSE TOLERANCE

MIL-STD-810F 516.5 Procedure IV 48 inches (1.2 meters), any edge, corner, or surface, in standby mode

CRUSH TEST

1,000 pounds (450 kg)

SEALING / WATER RESISTANCE

IEC 60529 class IP55; Protected against dust and waterjets (battery pack installed)

ESD

IEC 61000-4-2: (Open air up to 15kV or direct contact up to 8kV)

EMC (Emission)

CISPR 11 Group 1 Level B and FCC Part 15

EMC (Immunity)

IEC 61000-4-3 and IEC 61000-4-8

BATTERY PACK

MODEL

DBP-2003 (standard),
DBP-2013 (aviation; TSO C-142a)

POWER

12V, 2800 mAh

TYPE

Lithium/Manganese Dioxide
Disposable, recyclable,
non-rechargeable

CAPACITY*

125 shocks or 8 hours
continuous operation

STANDBY LIFE*

4 years

LOW BATTERY INDICATORS

Visible
Audible

*typical, with new battery at 25° C

SELF TESTS

AUTOMATIC

Automatic daily, weekly, monthly and quarterly circuitry tests

BATTERY INSERTION

System integrity test on battery insertion

PAD PRESENCE

Pads preconnected tested daily

USER-INITIATED

Unit and battery pack system test initiated by the user

STATUS INDICATION

Visual and audible indication of unit status

STATUS SCREEN

Unit self-test results
Pads and battery information (status and expiration)

PHYSICAL

SIZE

7.3 x 9.5 x 2.3 Inches
(18.5 x 24 x 5.8 cm)

WEIGHT (with battery)

Less than 3 lbs (1.4 kg)



105 Fourth Street, Unit A
Midland, ON L4R 3S9
Phone: 705-526-3853
Toll Free: (888) FRST-AID
info@firstforsafety.ca



The Lifeline VIEW AED
is cleared by the FDA

DAC-2703-BH

ELECTRONIC DISTRIBUTION

Automated External Defibrillator FAQ

www.defibtech.com



Frequently Asked Questions

Sudden Cardiac Arrest and Automatic External Defibrillators

Q: What is sudden cardiac arrest (SCA)?

A: The killer of more than 400,000 people a year, sudden cardiac arrest (SCA) causes the heart's normal heart rhythm to suddenly become chaotic. The heart can no longer pump the blood effectively and the victim collapses, stops breathing, becomes unresponsive, and has no detectable pulse. SCA can strike anyone, anytime. Children, teenagers, athletes, old people -- can all have SCAs. Although the risk of SCA increases with age and in people with heart problems, a large percentage of the victims are people with no known risk factors.

Q: Is SCA the same as a heart attack?

A: No. Both the heart attack (myocardial infarction) and a sudden cardiac arrest have to do with the heart, but they are different problems. SCA is an electrical problem; a heart attack is a "plumbing" problem. Sometimes a heart attack, which may not be fatal in itself, can trigger a sudden cardiac arrest.

THE TREATMENT FOR SCA

Q: What is the recommended treatment for SCA?

A: Defibrillation is the only treatment proven to restore a normal heart rhythm. When used on a victim of SCA, the automated external defibrillator (AED) can be used to administer a lifesaving electric shock that restores the heart's rhythm to normal. AEDs are designed to allow non-medical personnel to save lives.

Q: How much time do I have to respond if someone has a sudden cardiac arrest?

A: Only minutes. Defibrillate within three minutes and the chances of survival are 70 percent. After 10 minutes, the chances of survival are negligible.

Q: I know CPR; wouldn't it help?

A: CPR only buys a little more time, potentially giving the victim a small amount of extra time until a defibrillator arrives. But SCA ultimately requires a shock to restore a normal heart rhythm. As a result, most CPR training now also includes AED training.

THE NEED FOR AN AED

Q: How does an AED work?

A: Two pads, connected to the AED, are placed on the patient's chest. A computer inside the AED analyzes the patient's heart rhythm and determines if a shock is required to save the victim. If a shock is required, the AED uses voice instructions to guide the user through saving the person's life.

Q: Why do we need AEDs?

A: AEDs save lives. When a person has a sudden cardiac arrest, the heart becomes arrhythmic. Every minute that the heart is not beating lowers the odds of survival by 7-10 percent. After 10 minutes without defibrillation, very few people survive. On average, it takes an EMS between 7 minutes to more than 14 minutes to arrive in rural settings.

Q: What does the American Heart Association (AHA) say about AEDs?

A: The American Heart Association (AHA) strongly supports having AEDs in public areas such as sports arenas, office complexes, schools, doctors' offices, shopping malls, airports, and other public places. The AHA also advocates that all police and fire and rescue vehicles be equipped with an AED.

EASY TO USE

Q: Is an AED complicated to use?

A: AEDs are very easy to use. An AED can be used by practically anyone who has been shown what to do. In fact, there are a number of cases where people with no training at all have saved lives.

Q: Can a non-medical person make a mistake when using an AED?

A: AEDs are safe to use by anyone who has been shown how to use them. The AED's voice guides the rescuer through the steps involved in saving someone; for example, "apply pads to patient's bare chest" (the pads themselves have pictures of where they should be placed) and "press red shock button." Furthermore, safeguards have been designed into the unit precisely so that non-medical responders can't use the AED to shock someone who doesn't need a shock.

Q: Can the AED itself make a mistake?

A: It is unlikely. Studies show that AEDs interpret the victim's heart rhythm more quickly and accurately than many trained emergency professionals. If the AED determines that no shock is needed, it will not allow a shock to be given.

Q: Can I be sued if I help someone suffering from SCA?

A: State and federal "Good Samaritan" laws cover users who, in good faith, attempt to save a person from death. To date, there are no known judgments against anyone who used an AED to save someone's life.

Q: Has anyone been revived by using a Defibtech AED?

A: Defibtech AEDs have saved many lives since they were introduced to the market in 2003.

MAINTENANCE

Q: How often must I change batteries?

A: Defibtech AEDs come with a lithium battery pack that is available in a 5- or 7-year size. If the unit is used frequently, the battery pack may have to be replaced more often. The AED will inform the user when the battery pack needs to be replaced.

Q: What else do I need to do to keep my AED in working order?

A: The pad package must be replaced every two years. Otherwise, the AED performs automatic self-checks on a daily basis to test its operational readiness. If anything is not fully functional, the unit will make a loud chirp and flash a red light warning the owner that servicing may be required.

BUYING AN AED

A: Can anyone buy an AED?

Q: Anyone can buy an AED. The Food and Drug Administration's (FDA) rules require a physician's prescription (AEDs are manufactured and sold under guidelines approved by the Food and Drug Administration) before the unit can be delivered.

Q: What features should I look for in an AED?

A: Look for 1) an AED that is easy for non-medical people to use, 2) an AED that is technically reliable, and 3) one that is reasonably priced. Defibtech AEDs more than meet all three requirements.

Q: Why are Defibtech AEDs better than other AEDs?

A: Defibtech designs units from the ground up, building on a foundation of previous medical device knowledge and incorporating a number of design and technological innovations. As a result, Defibtech AEDs are state-of-the-art defibrillators designed for non-medical personnel as well as for professional responders.

A: How do I buy Defibtech AEDs?

Q:

FIRST FOR SAFETY



105 Fourth Street, Unit A
Midland, ON L4R 3S9
Phone: 705-526-3853
Toll Free: (888) FRST-AID
info@firstforsafety.ca